

## HAYMAKING

# Rs90

rotary scythe

**MECHANICAL REDUCER**  
belt transmission



**RUNNING SPEED**



**AMATEUR**



## Rs90

<b>ENGINE</b>	<b>B&amp;S</b> 575 Ex series 140 cc 2.3 kW Petrol	<b>Euro</b> 139.ohv 139 cc 2.7 kW Petrol	<b>Euro</b> R170.ohv 173 cc 3.2 kW Petrol
<b>STARTER</b>	recoil		
<b>HANDLEBAR</b>	vertically adjustable		
<b>TRANSMISSION</b>	endless screw in oil bath and belt		
<b>CUTTING SYSTEM</b>	rotary disc with vertical axis Ø57 cm with 4 retracted blades fixed cutting height 3.2 cm		
<b>OTHER</b>	rake kit (optional)		
<b>DRIVE WHEELS</b>	puncture proof, tractor profile 13x5.00-6"		
<b>NET WEIGHT</b>	62.5 kg	63 kg	63 kg
<b>DIMENSIONS</b>	64x162x107(h) cm		



**G.WEIGHT** 66 KG

**PACKAGING** MACHINE 80X59X57(H) CM ROTARY DISC 70X60X37(H) CM

**PALLET** MACHINE 80X120X240(H) CM / Q\* 8PCS ROTARY DISC 80X120X164(H) CM / Q\* 8PCS



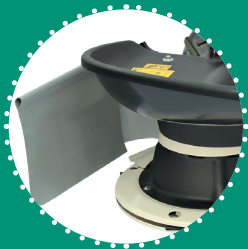
**HANDLEBAR**  
vertically adjustable



**LEVERAGES**  
traction + tool coupling  
with integrated safety  
system






**ROTARY DISC**  
4 retractable blades  
cutting width 57 cm



**RAKE KIT**  
strip with side sheet for  
windrow creation



**SNOW BLADE**  
85 cm  
adjustable  $\pm 30^\circ$

-  **AS STANDARD**
-  **ACCESSORY**
-  **PATENTED**