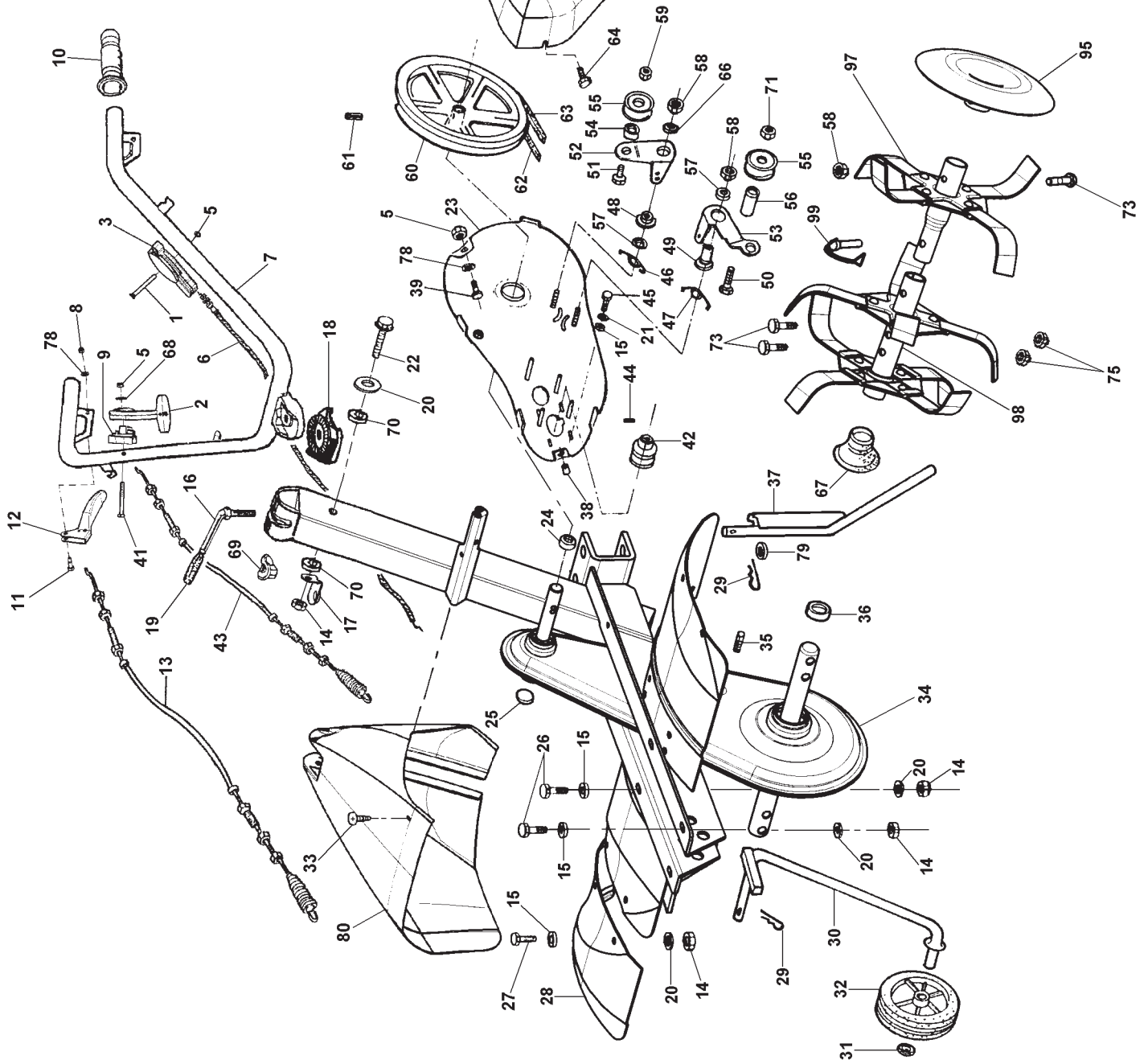


This exploded view diagram illustrates the assembly of a mechanical component, likely a pump or motor housing. The main housing (23) is shown at the bottom left. Various internal components are shown in their relative positions, indicated by dashed lines. The parts are numbered as follows:

- 23: Main housing or base plate.
- 24: A small circular gasket or seal.
- 25: A small circular gasket or seal.
- 26: A small circular gasket or seal.
- 27: A small circular gasket or seal.
- 28: A small circular gasket or seal.
- 29: A small circular gasket or seal.
- 30: A small circular gasket or seal.
- 31: A small circular gasket or seal.
- 32: A small circular gasket or seal.
- 33: A small circular gasket or seal.
- 34: A small circular gasket or seal.
- 35: A small circular gasket or seal.
- 36: A small circular gasket or seal.
- 37: A small circular gasket or seal.
- 38: A small circular gasket or seal.
- 39: A small circular gasket or seal.
- 40: A small circular gasket or seal.
- 41: A small circular gasket or seal.
- 42: A small circular gasket or seal.
- 43: A small circular gasket or seal.
- 44: A small circular gasket or seal.
- 45: A small circular gasket or seal.
- 46: A small circular gasket or seal.
- 47: A small circular gasket or seal.
- 48: A small circular gasket or seal.
- 49: A small circular gasket or seal.
- 50: A small circular gasket or seal.
- 51: A small circular gasket or seal.
- 52: A small circular gasket or seal.
- 53: A small circular gasket or seal.
- 54: A small circular gasket or seal.
- 55: A small circular gasket or seal.
- 56: A small circular gasket or seal.
- 57: A small circular gasket or seal.
- 58: A small circular gasket or seal.
- 59: A small circular gasket or seal.
- 60: A small circular gasket or seal.
- 61: A small circular gasket or seal.
- 62: A small circular gasket or seal.
- 63: A small circular gasket or seal.
- 64: A small circular gasket or seal.
- 65: A small circular gasket or seal.
- 66: A small circular gasket or seal.
- 67: A small circular gasket or seal.
- 68: A small circular gasket or seal.
- 69: A small circular gasket or seal.
- 70: A small circular gasket or seal.
- 71: A small circular gasket or seal.
- 72: A small circular gasket or seal.
- 73: A small circular gasket or seal.
- 74: A small circular gasket or seal.
- 75: A small circular gasket or seal.
- 76: A small circular gasket or seal.
- 77: A small circular gasket or seal.
- 78: A small circular gasket or seal.
- 79: A small circular gasket or seal.
- 80: A small circular gasket or seal.
- 81: A small circular gasket or seal.
- 82: A small circular gasket or seal.
- 83: A small circular gasket or seal.
- 84: A small circular gasket or seal.
- 85: A small circular gasket or seal.
- 86: A small circular gasket or seal.
- 87: A small circular gasket or seal.
- 88: A small circular gasket or seal.
- 89: A small circular gasket or seal.
- 90: A small circular gasket or seal.
- 91: A small circular gasket or seal.



1	86.2356.200	35	85.2520.000	79	84.3994.000
2	33.0010.900 Δ	36	80.2095.010	80	36.0005.970 ○
3	32.1010.920	37	36.0012.100	-	36.0005.971 ●
-	32.1010.930 HONDA	38	80.8990.000	-	36.0005.980 ○ □
4	86.2070.010	39	86.2097.010	-	36.0005.981 ● □
5	81.4548.000	40	84.3570.000	82	27.0011.943 Δ
6	26.0050.238	41	86.2470.100 Δ	83	36.0020.118 Δ
-	36.0010.123 ■	42	36.0020.110	85	36.0020.114 Δ
7	36.0010.094 Δ ←←	43	36.0010.122 Δ	86	81.2523.050 Δ
-	36.0010.093 Δ →→	44	86.2010.000	87	34.1012.364 Δ
-	36.0010.095	45	86.2439.070	88	36.0005.172 Δ
8	81.4530.080	46	36.0005.952 Δ	89	86.1998.000 Δ
9	33.0010.905 Δ	47	36.0005.950	90	36.0005.162 Δ
10	23.1050.906	48	36.0005.217 Δ	91	80.1102.000 Δ
11	26.0010.216	49	36.0005.215	95	36.0015.213
12	26.0050.285	50	86.3997.100 ←	97	36.0015.290 DX
13	36.0010.120	-	86.3703.000 →	-	36.0015.292 SX
14	81.4588.000	51	86.3750.000 Δ	98	36.0015.280 DX
15	84.3685.000	52	36.0005.233 Δ	-	36.0015.282 SX
16	22.0010.202	53	36.0005.230 ←	99	85.2110.000
17	36.0010.130	-	36.0005.237 →		
18	22.0010.280 ←←	54	36.0005.212 Δ	Δ	RETROMARCIA - REVERSE DRIVE - RÜCKWÄRTSGANG MARCHE ARRIERE
-	22.0010.284 →→	55	26.0005.906	□	MOTORE B&S INTEK
19	82.8407.000	56	36.0005.210 ←	○	ROSSO - RED - ROT - ROUGE
20	84.3708.000	57	84.3812.000	●	VERDE - GREEN - GRÜNE - VERT
21	84.3667.000	58	81.4645.000	■	HONDA GC135 - GC160
22	86.3040.000	59	81.4703.000	←	767381
23	36.0005.197	60	36.0005.200	→	767382
24	80.2052.000	61	85.1287.000	←←	980241
25	80.1910.000	62	32.1005.189 Δ	→→	980242
26	86.2785.000	63	36.0005.190		
27	86.2546.000	64	86.2120.000		
28	36.0015.090 DX ○	65	36.0005.960 ○		
-	36.0015.091 SX ○	-	36.0005.961 ●		
-	36.0015.092 DX ●	66	36.0005.220		
-	36.0015.093 SX ●	67	36.0015.900		
29	85.1486.000	68	84.3619.000		
30	36.0012.130	69	22.0010.213		
31	84.3993.080	70	32.1010.901		
32	26.0050.904	71	81.4703.100		
33	86.3988.200	73	86.3427.000		
34	36.0005.561 ○	75	81.4642.000		
-	36.0005.562 ●	78	84.3605.010		